



## Dukeries Academy - Social Distancing and Academy Pupil Capacity Plan September onwards

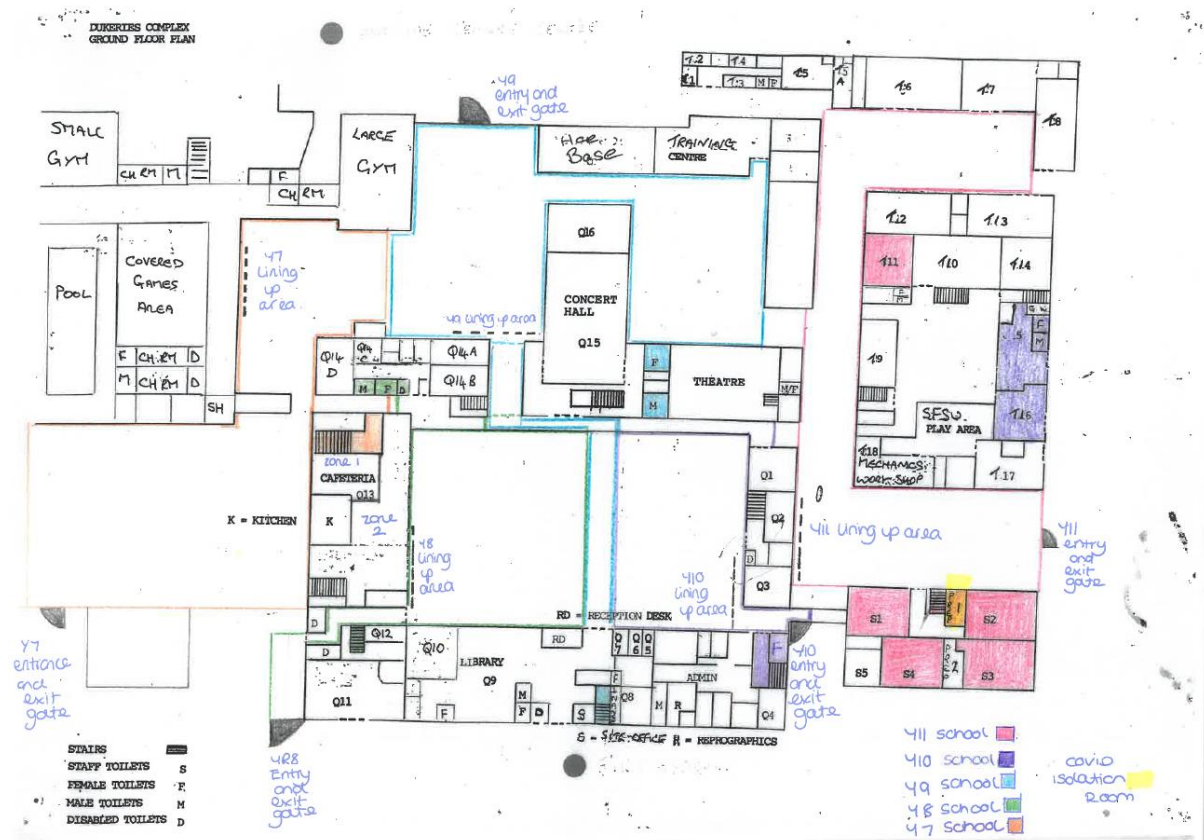
We have then taken this a process a step further and reviewed the available space at Dukeries Academy. This is based on:

- The size of each space within building
- The suitability of each space taking into account fixed furniture and required teachers' space
- Location of toilet facilities
- Size of corridor/circulation areas
- Number of pupils expected to return in each year group
- Specific needs of individual pupils

This methodology has identified the following number of pupils can be safely occupy each class space within the academy and still meet social distancing requirements. The following table outline all space within the academy and is numbered in line with the corresponding site plan:

### SITE PLAN BELOW

#### Ground Floor





First Floor

